



INTERNATIONAL SOCIAL WORK TRACK PROPOSAL

5/6/11

International Social Work

- Social workers are frequently called upon to deal with problems that have international dimensions
 - Needs of refugees and immigrants
 - Human rights violations
 - Poverty
 - Trauma related to war, terrorism, or natural disasters
 - Gender inequality
 - Rapid and unplanned urbanization
 - Racial and ethnic discrimination
 - Cultural conflicts
 - International adoption



International Track Curricular Goals



- ❑ Expand course offerings with international content
- ❑ Offer field placements that provide an international focus
- ❑ Expose students to foreign language study
- ❑ Provide/encourage study abroad
- ❑ Resist “credit creep” - meet global learning objectives without overloading students with additional curriculum requirements

International Track

- BSSW = 120 hours
 - ▣ GE courses = 54
 - ▣ Major courses = 35
 - ▣ Field Placement = 10
 - ▣ Social Work electives = 15
 - ▣ Free electives = 6
- International Track replaces 21 hours of electives and 6 hours of Open Option GE courses with:
 - ▣ International Social Work core course = 3
 - ▣ Elective hours from “international course basket” = 9
 - ▣ Foreign language = 9
 - ▣ International experience = 6
- International experience = study abroad or internationally focused field placement + 6 hours of internationally focused GE courses

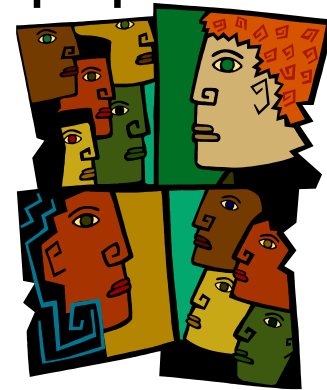
International Course “Basket”



- Includes social work electives with international content
 - Examples:
 - Human Trafficking: Domestic & Global Perspectives
 - Social Policies & Human Services in the Latino Community
 - Psychological Aspects of HIV/AIDS
 - Adolescent Parenthood and Sexuality: International Perspective
 - Women & Aging: International Perspective
- And non-social work electives with international content
 - List TBD

Internationally-Focused Field Placement

- All social work major students must complete a senior year field placement
 - ▣ 2 semesters
 - ▣ 420 clock hours
- International track students, if not completing a study abroad, will receive priority placement in a social service agency that serves a significant percentage of diverse international populations, such as immigrants, refugees, and undocumented persons



Challenges



- Concurrent development of international program and semester curriculum
 - ▣ Chose to “redo” curriculum for semesters – majority of courses will be taught for the first time in 2012
- Field placement resources
- Scholarship dollars for study abroad
- The “unknown” in terms of number of students who choose international track

Final Steps



- Define options for non-social work electives
- Complete international track assessment tools
 - ▣ Student exit survey
 - ▣ Internationally-focused field placement evaluation
- Develop written materials
 - ▣ Advising sheet
 - ▣ Informational sheet
 - Policies
 - Courses and content
 - Career opportunities

Questions?

